



CitySync JetBlack™ Technology

And the amazing ANPR Trick!



CitySync, the leading manufacturer of Automatic Number Plate Recognition Systems are always at the forefront of graphics technology and we now want to show you our best trick to date... and it's called "JetBlack™".

Reading this is NOT going to give you the full effect of JetBlack™ You have got to see it for yourself, and when you do you will realise that you have just witnessed the biggest thing to hit ANPR since the development of Infra Red cameras.

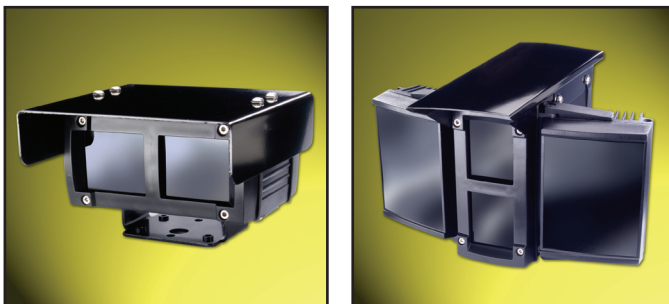
The key to good ANPR is imaging. If the image of the number plate is dull, grainy or unclear, then even the best ANPR engines such as the CitySync Jet Engine may struggle.

The Jet Engine owes its success to speed. The algorithms have been developed over many years to take multiple grabs of a plate as a vehicle approaches and then use several methods of recognition to identify the plate.

The speed of image processing is dependent on two things: the power and capability of the processing hardware and the complexity of the image. It has been well proven that using Infra Red cameras delivers the best 24 hour recognition for retro-reflective plates – but during the sunniest period of the day the image may appear to contain thousands of small artifacts that need to be processed and eliminated from the plate finder algorithms. The problem doesn't go away at night time either: bright headlights can cause smear on the image and disrupt plate finding methods. This all takes time and decreases available plate processing time.

Just imagine if you could wave a magic wand and simply eliminate EVERYTHING from a video image except the number plate! Bright reflective bumpers, dazzling windscreens and at night main beam headlights – all gone.

JetBlack™ technology can do all this right now!



JetBlack™ Technology has been incorporated into the JetCam Fox analogue range of cameras.



This powerful new technology uses high speed Infra Red Image Processing methods to deliver clear images of retro reflective number plates, whilst filtering out all unwanted parts of the image. The result is a sharp, high contrast plate – even on the sunniest of days or against the brightest of headlights.

The examples below show the effect of **JetBlack™** technology. The first image shows a UK plate at night with a powerful halogen driving light. The standard JetCam minimises the flare but the image still contains the light itself and background noise. The image on the right shows the effect of JetBlack™ technology. The in-camera processor removes every pixel that isn't reflecting light from the Fox camera resulting in an almost artifact-free image.



Normal ANPR IR Image at night

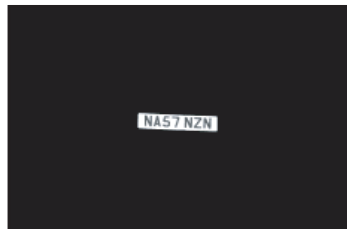


ANPR Image using JetBlack™ Technology

The examples below show **JetBlack™** technology on bright day-time images.



Normal ANPR IR Image in daylight



ANPR Image using JetBlack™ Technology

The examples on the left were processed at approximately 300 images per second on a 3Ghz processor. The examples on the right from the JetCam Fox powered with JetBlack™ technology were processed on the same machine at approximately 3000 images per second. An amazing 10 times increase in speed.

Quite a trick I think you'll agree!



CitySync Limited
Turpin Court
124a Great North Road
Hatfield, Herts
AL9 5JN, UK

www.citysync.co.uk

T: +44 (0) 1707 275169

F: +44 (0) 1707 273876

Specifications subject to change without notice

ANPR you can trust

